

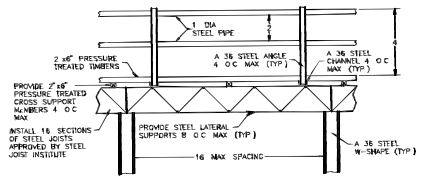
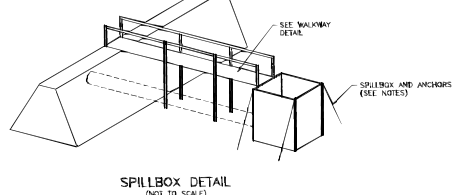
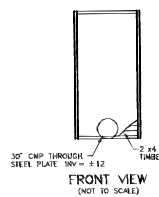
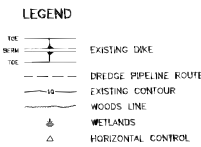
PIPELINE ROUTE MAP
SCALE 1 = 1000

COORDINATES OF HORIZONTAL CONTROL POINTS		
STATION	NORTH (±)	EAST (±)
BCP #1	209 310.87	2 600 211.39
BCP #2	209 893.75	2 599 880.58
BCP #3	208 515.51	2 599 930.00

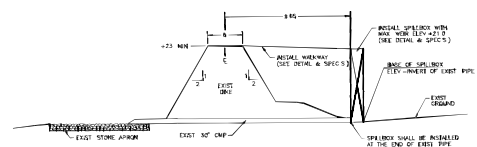
PLAN VIEW
SCALE 1 = 100

NOTES

- Topographic information was obtained from Boundary and Topographic Survey provided by Bolden & Orsog, Ltd from aerial photogrammetry performed by Photogrammetric Data Services, Inc. Aerial photography dated 15 April, 1986
- Coordinates are in feet referred to Virginia State Grid (south zone) and are based on North American Datum of 1927 (NAD27)
- Elevations are in feet referred to National Geodetic Vertical Datum (NGVD)
- Contractor shall place the spillbox at the indicated location with the specified elevation, ensure that all four sides are level and install sufficient anchors to prevent movement during the filling of the placement area
- Anchor rods shall be the SS series screw anchors as manufactured by A.B. Chance Co., Centralia Mo. 65240 or approved equal, having a minimum holding capacity of 10 KIPS each
- For the spillbox use 2"x4" rough cut to fit firmly between channel grades, this will prevent boards from floating during dredging, yet allow removal of boards in 4" increments during consolidation period



- NOTES
- MEMBERS MAY BE WELDED OR BOLTED. CONTRACTOR REQUIRED TO DESIGN CONNECTIONS AND DIMENSIONS ACCORDING TO AISC STANDARDS
 - MINIMUM WIDTH OF WALKWAY IS 3'



The information depicted represents the results of surveys made on dates indicated and can only be considered as indicating the general conditions existing at that time

REVISION	DATE	DESCRIPTION	BY	APP'D

WATERWAY SURVEYS & ENGINEERING, LTD VIRGINIA BEACH, VIRGINIA		DEPARTMENT OF THE ARMY NORFOLK DISTRICT, CORPS OF ENGINEERS NORFOLK, VIRGINIA	
SUFFOLK, VIRGINIA			
BENNETTS CREEK PLANS FOR DREDGING HARBOR VIEW PLACEMENT SITE			
DESIGNED	D.N.W.	DRAWN	C.H.K.
CHECKED	J.B.W.	IN S.P.	J.B.W.
SCALE 1 = 100'		SHEET 2 OF 2	
DATE 16 OCT 91		FILE NO H-11-17-07(2)	