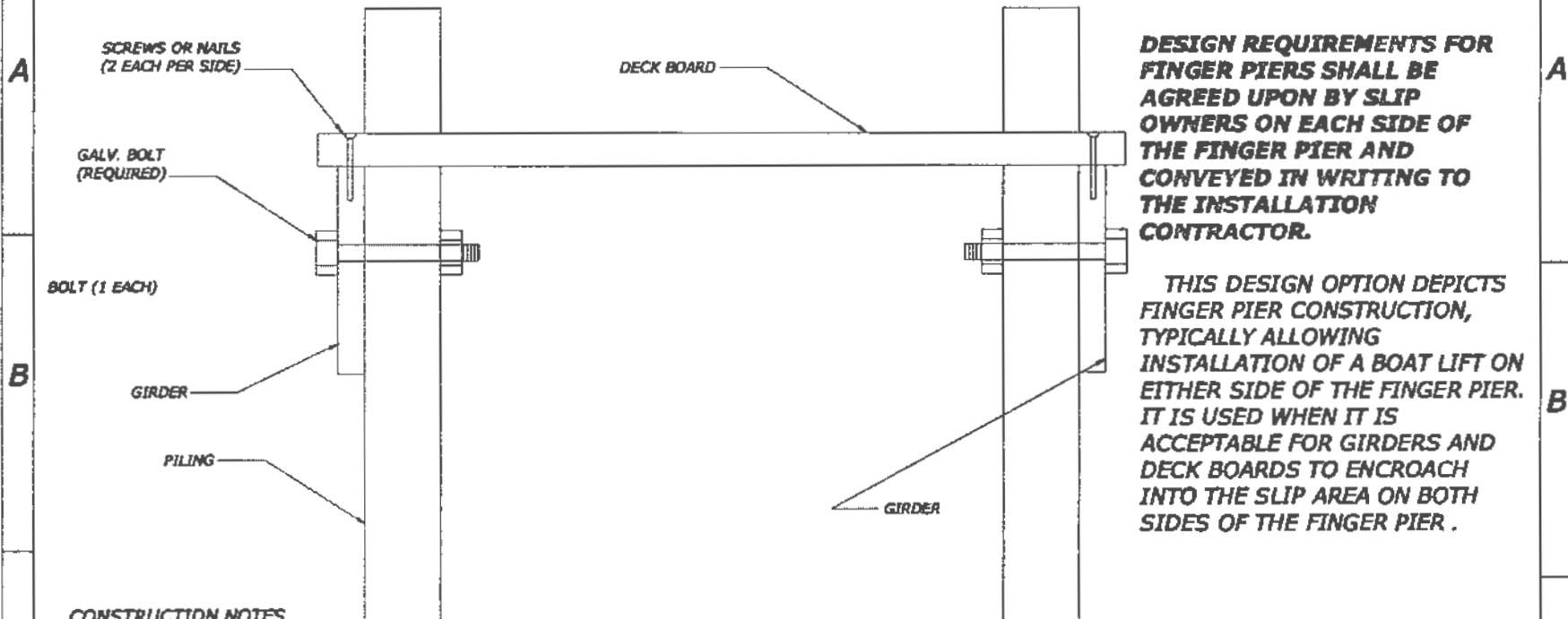


IF ANY ERRORS OR OMISSIONS ARE DISCOVERED ON THESE PLANS THAT HAVE AN ADVERSE AFFECT ON THE INTENDED WORK, THAT PORTION OF THE WORK SHALL BE DISCONTINUED UNTIL A SOLUTION IS DEVELOPED BY THE DESIGNER, BUILDING INSPECTOR AND/OR THE GENERAL CONTRACTOR. THE SOLUTION MUST CONFORM TO APPLICABLE CODES. ALL LOCAL AND STATE CODES APPLY FOR THE CONSTRUCTION OF THIS BUILDING. IF ANY INFORMATION ON THESE PLANS IS IN CONFLICT WITH THE APPLICABLE CODE(S), THE CODE(S) SHALL GOVERN.



DESIGN REQUIREMENTS FOR FINGER PIERS SHALL BE AGREED UPON BY SLIP OWNERS ON EACH SIDE OF THE FINGER PIER AND CONVEYED IN WRITING TO THE INSTALLATION CONTRACTOR.

THIS DESIGN OPTION DEPICTS FINGER PIER CONSTRUCTION, TYPICALLY ALLOWING INSTALLATION OF A BOAT LIFT ON EITHER SIDE OF THE FINGER PIER. IT IS USED WHEN IT IS ACCEPTABLE FOR GIRDERS AND DECK BOARDS TO ENCR OACH INTO THE SLIP AREA ON BOTH SIDES OF THE FINGER PIER .

CONSTRUCTION NOTES

1. DECK BOARDS AND GIRDERS SHALL BE PRESSURE TREATED.
 - GIRDERS, 2X10 (MINIMUM), SPAN NOT TO EXCEED 10'.
 - DECK BOARDS, 2X6 (MINIMUM), SPAN NOT TO EXCEED 6'
 - GAPS BETWEEN DECKBOARDS SHALL BE 1/2" (MINIMUM)
2. DECK FASTENERS:
 - SCREWS, STAINLESS STEEL, 3" MIN LENGTH, #10 GAGE
 - NAILS, GALVANIZED, RING OR SPIRAL SHANK ONLY, 3" MIN LENGTH x 20d or EQUIVALENT
 - DO NOT USE STRAIGHT SHANK NAILS AS THE NAIL HEADS WILL POP UP ABOVE THE SURFACE OF THE DECK OVER TIME.
3. GIRDER FASTENERS
 - BOLTS, W/ WASHERS, GALVANIZED, 5/8" DIAMETER (MINIMUM) x REQD. LENGTH
 - LAG SCREWS, W/ WASHERS, GALVANIZED, 1/2" DIAMETER (MINIMUM) x 8" LENGTH (MINIMUM)

FINGER PIER DESIGN OPTION 1

Designer:
Neil Wilson
100 Windy Point Drive
Suffolk, VA 23435
Occupation: Engineer

BCL BOAT SLIP - FINGER PIER CONST DETAILS

SHEET
1

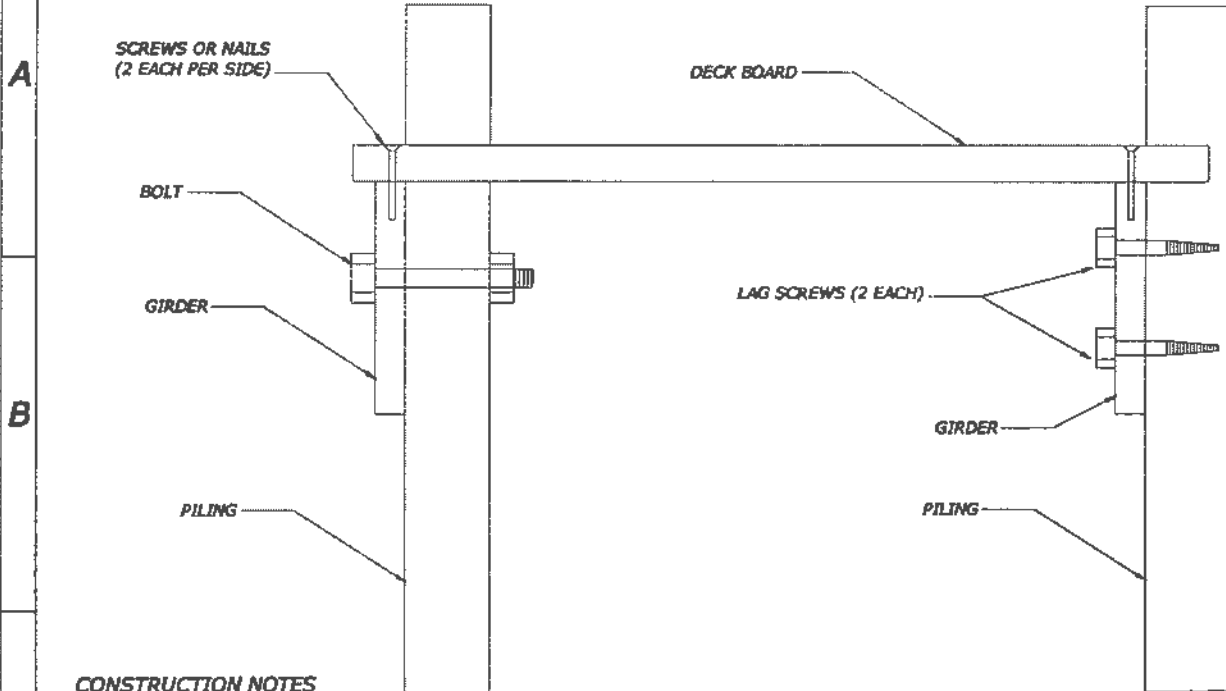
NO.	DATE	REVISION DESCRIPTION
1		
2		
3		

These plans were designed and drawn using computerized construction practices in Virginia, and conform to the International Residential Code (IRC) and the Virginia Uniform Statewide Building Code (VUBC) with any necessary amendments to the plans may be necessary. See to determine if any amendments are required. The contractor shall be responsible for any amendments or corrections. The contractor shall not be held liable for human error after construction begins.

While every attempt has been made in the preparation of this plan to avoid errors, omissions, and omissions, the designer can not guarantee against human error. The contractor and/or client shall verify all conditions, dimensions, details and specifications and be responsible for the same. The contractor shall not be held liable for human error after construction begins.

It is the intent of these drawings to provide accurate information to the experienced builder to construct the project shown. It is the builder's responsibility to verify accuracy and compliance with all regulatory agency prior to construction and their requirements take precedence over these plans.

IF ANY ERRORS OR OMISSIONS ARE DISCOVERED ON THESE PLANS THAT HAVE AN ADVERSE AFFECT ON THE INTENDED WORK, THAT PORTION OF THE WORK SHALL BE DISCONTINUED UNTIL A SOLUTION IS DEVELOPED BY THE DESIGNER, BUILDING INSPECTOR AND/OR THE GENERAL CONTRACTOR. THE SOLUTION MUST CONFORM TO APPLICABLE CODES. ALL LOCAL AND STATE CODES APPLY FOR THE CONSTRUCTION OF THIS BUILDING. IF ANY INFORMATION ON THESE PLANS IS IN CONFLICT WITH THE APPLICABLE CODE(S), THE CODE(S) SHALL GOVERN.



DESIGN REQUIREMENTS FOR FINGER PIERS SHALL BE AGREED UPON BY SLIP OWNERS ON EACH SIDE OF THE FINGER PIER AND CONVEYED IN WRITING TO THE INSTALLATION CONTRACTOR.

THIS DESIGN OPTION DEPICTS FINGER PIER CONSTRUCTION, TYPICALLY ALLOWING INSTALLATION OF A BOAT LIFT ADJACENT TO THE PILING ON THE LEFT, WHILE MAINTAINING THE MAXIMUM SLIP WIDTH ADJACENT TO THE PILING ON THE RIGHT. (I.E., THE FINGER PIER, INCLUDING GIRDER AND DECK BOARDS, DO NOT ENCR OACH PAST THE RIGHT MOST PILING.

CONSTRUCTION NOTES

1. DECK BOARDS AND GIRDERS SHALL BE PRESSURE TREATED.
 - GIRDERS, 2X10 (MINIMUM), SPAN NOT TO EXCEED 10'.
 - DECK BOARDS, 2X6 (MINIMUM), SPAN NOT TO EXCEED 6'
 - GAPS BETWEEN DECKBOARDS SHALL BE 1/2" (MINIMUM)
2. DECK FASTENERS:
 - SCREWS, STAINLESS STEEL, 3" MIN LENGTH, #10 GAGE
 - NAILS, GALVANIZED, RING OR SPIRAL SHANK ONLY, 3" MIN LENGTH x 20d or EQUIVALENT
 - **DO NOT USE STRAIGHT SHANK NAILS AS THE NAIL HEADS WILL POP UP ABOVE THE SURFACE OF THE DECK OVER TIME**
3. GIRDER FASTENERS
 - BOLTS, W/ WASHERS, GALVANIZED, 5/8" DIAMETER (MINIMUM) x REQD. LENGTH
 - LAG SCREWS, W/ WASHERS, GALVANIZED, 1/2" DIAMETER (MINIMUM) x 8" LENGTH (MINIMUM)

**FINGER PIER
DESIGN OPTION 2**

Designer:
Neil Wilson
100 Windy Point Drive
Suffolk, VA 23435
Occupation: Engineer

**BCL BOAT SLIP - FINGER
PIER CONST DETAILS**

SHEET

2

NO.	DATE	REVISION DESCRIPTION
1		
2		
3		

These plans were designed and drawn using standard construction practices in Virginia, and are subject to the Virginia Building Code (VBC) and the Virginia Uniform Statewide Building Code (VUSBC). The designer is not responsible for any errors or omissions that may occur in the construction of this project. These specifications shall only be done by a qualified architect, designer, contractor or structural engineer.

While every attempt has been made in the preparation of these plans to avoid errors, omissions, and omissions, the designer can not guarantee against them. The user must make their own determination of the accuracy of the plans. The designer will not be liable for human error under construction delays.

It is the intent of these drawings to provide sufficient information to the experienced builder to construct the project shown. It is the builder's responsibility to verify all dimensions and conditions with all regulatory agencies prior to construction and their requirements that preclude over time.

812 Professional Place | Chesapeake, VA 23320

Call Us Toll Free: 800.446.8056

Local: 757.436.4400



[HOME](#)

[FAQS](#)

[MARINE CATALOG](#)

[ABOUT US](#)

[LINKS](#)

[CONTACT US](#)

Sea Port Marine Corporation

812 Professional Place
Chesapeake, VA 23320



Local: 757.436.4400
Fax: 757.436.1460

Toll Free:
800.446.8056

Store Hours

Mon-Fri	7am-5pm
Sat-Sun	Closed

Welcome to Sea Port Marine Corporation's website. We tried to show all the products and services we offer but found that to be impossible. If you do not see what you are looking for, please call, fax or e-mail our sales department where you will find a knowledgeable & helpful salesperson ready to service your construction hardware needs. We can help with projects as small as a backyard swim platform or as large as a double deck aircraft carrier pier. So for the best service and quality, turn your construction material needs over to us. Sea Port Marine wants to be your hardware supplier for boat dock parts, pier & dock building supplies.



Sea Port Marine strives to be your one stop marine construction material supplier. Our expert sales team can help with any size project or bid, big or small. Mail, fax, or e-mail us your job take-offs or send the plans and specifications and we will do the take-off for you. We have supplied take-offs and material for some of the largest maritime projects in the world. Sea Port has shipped material all over the United States, the West Indies, the Bahamas, Puerto Rico and as far away as Malta. We look forward to serving all your marine construction hardware requirements.

• Have questions?

Visit Sea Port Marine Corporation's FAQ page

• Need supplies?

Check out Sea Port Marine's extensive inventory of boat dock parts and accessories. [CLICK HERE](#)

• Cant find it?

Give us a call toll free at (800) 446-8056 and let our knowledgeable staff help you with any questions you may have.

[Click here to DOWNLOAD
Sea Port Marine's catalog!](#)

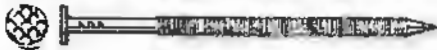
[Home](#) | [FAQ](#) | [Marine Catalog](#) | [Site Map](#) | [About Us](#) | [Contact Us](#)



Swan Secure

Swan Secure "Portlands" Fiber Cement Siding Nails 316 Stainless Steel

- Annular Ring Thread
- Sharp Diamond Point
- Checker Pattern Head



Length	Gauge	Shank Dia.	Head Dia.	Approx. Count/Lb.
1-1/4	11	.120	11/32	199
1-1/2	11	.120	9/32	179
2	11	.120	8/32	144
2-1/2	11	.120	8/32	115

Swan Secure Cedar & Redwood Decking Nails 304 Stainless Steel

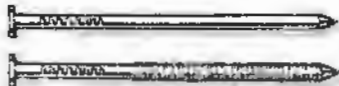
- Small Flat Head • Annular Ring Thread



Penny Size	Length	Gauge	Shank Dia.	Head Dia.	Approx. Count/Lb.
8d	2-1/2	12	.109	7/32	145
10d	3	12	.109	7/32	120
12d	3-1/4	12	.109	7/32	110
16d	3-1/2	11	.120	1/4	98

Swan Secure Stainless Steel "Un-Commons" 304 Stainless Steel or 316 Stainless Steel

- Smooth Shank or Threaded
- Smooth or Checkered Flat Head
- Diamond Point



Penny Size	Length	Gauge	Shank Dia.	Head Dia.	Approx. Count/Lb.
2d	1	15	.072	3/16	807
3d	1-1/4	14	.083	7/32	473
4d	1-1/2	12	.109	1/4	228
5d	1-3/4	12	.109	1/4	193
6d	2	11	.120	17/64	144
7d	2-1/4	11	.120	17/64	133
8d	2-1/2	10	.134	9/32	94
10d	3	9	.148	5/16	67
12d	3-1/4	9	.148	5/16	60
16d	3-1/2	8	.165	11/32	44
20d	4	6	.203	7/16	25
30d	4-1/2	6	.203	7/16	22
40d	5	6	.203	7/16	19
60d	6	4	.238	15/32	12

Swan Secure Joist Hanger Nails 304 Stainless Steel or 316 Stainless Steel



Length	Gauge	Shank Dia.	Head Dia.	Approx. Count/Lb.
1-1/2	10	.134	5/16	147
1-1/2	9	.148	5/16	126
2-1/2	10	.134	5/16	84
3	9	.148	5/16	67
3-1/2	8	.165	3/8	44

Swan Secure Post & Beam Nails 304 or 316 Stainless Steel or Bronze

- Smooth Flat Head • Diamond Point
- Annular Ring or Screw Shank



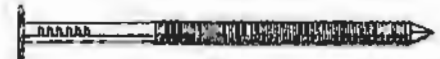
Penny Size	Length	Gauge	Shank Dia.	Head Dia.	Approx. Count/Lb.	
					Stainless	Silicon Bronze
8d	2	12	.109	17/64	175	181
8d	2-1/2	11	.120	9/32	115	104
10d	3	10	.134	5/16	79	71
12d	3-1/4	10	.134	5/16	72	65
16d	3-1/2	9	.148	5/16	56	48
20d	4	8	.165	3/8	40	36
30d	4-1/2	8	.165	3/8	35	33
40d	5	8	.165	3/8	31	29
40d	5	6	.203	7/16	19	18
60d	6	6	.203	7/16	17	15
60d	6	4	.238	15/32	12	11
70d	7	4	.238	15/32	10	9

- Slightly lighter gauge than our "Un-Commons". Post & Beam Nails are easily driven with a minimum of splitting.
- Favored for cooling tower construction, repair & upgrade. These nails are ideal for either fir or redwood jobs.
- Use longer lengths for framing jobs using pressure treated structural members
- Annular Ring thread for best withdrawal resistance.
- Screw Shank for shear loading and end grain work.

Swan Secure "Sea-Cure" Nails For Marine Service

304 Stainless or 316 Stainless Steel Commercial or Silicon Bronze, Monel

- Large Flat Head
- Annular Ring Thread
- Diamond Point

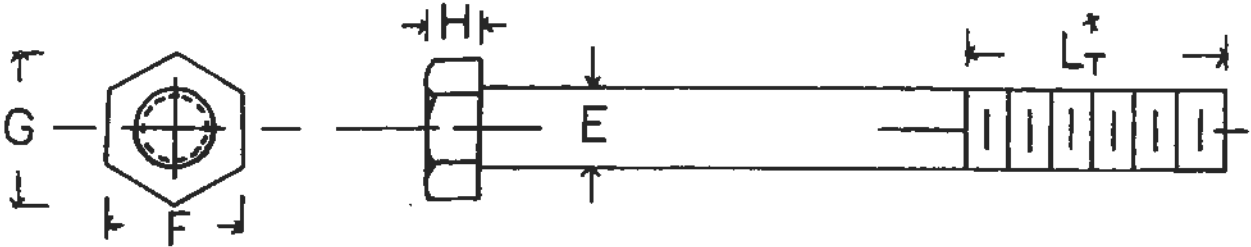


Length	Gauge	Shank Dia.	Head Dia.	Approx. Count/Lb.	
				Stainless	Copper Alloy
3/4	15	.072	3/16	1050	913
3/4	14	.083	7/32	757	664
7/8	14	.083	7/32	657	617
1	15	.072	3/16	807	689
1	14	.083	7/32	622	536
1	12	.109	17/64	384	303
1-1/4	14	.083	7/32	473	424
1-1/4	13	.095	9/32	357	324
1-1/4	12	.109	17/64	272	245
1-1/2	14	.083	7/32	413	374
1-1/2	12	.109	17/64	228	204
1-1/2	10	.134	3/8	147	132
1-3/4	12	.109	17/64	193	179
1-3/4	10	.134	3/8	190	118
2	12	.109	17/64	176	161
2	10	.134	3/8	114	104
2	8	.165	7/16	75	65
2-1/2	12	.109	17/64	138	128
2-1/2	10	.134	3/8	94	83
2-1/2	8	.165	7/16	62	54
3	10	.134	3/8	79	71
3	9	.148	3/8	67	58
3	8	.165	7/16	51	45
3	6	.203	1/2	34	31
3-1/4	9	.148	3/8	60	52
3-1/4	8	.165	7/16	48	43
3-1/4	6	.203	1/2	31	27
3-1/2	8	.165	7/16	44	40
3-1/2	6	.203	1/2	29	26
4	6	.203	1/2	25	23
4	4	.238	9/16	18	17
4-1/2	6	.203	1/2	22	20
4-1/2	4	.238	9/16	16	15
5	6	.203	1/2	19	18
5	4	.238	9/16	15	14
6	4	.238	9/16	12	11

- Large bearing surface under heads holds planking securely to framing members on new construction and re-nailing projects.
- Annular Ring "Barbed" Threads provide maximum holding power and resistance to nail head popping.
- Specify Type 316 Stainless Steel to minimize discoloration of heads and paint bleed-through.
- Silicon Bronze offers best resistance to stress-corrosion cracking under heads in salt water service.



Hex Head Machine Bolts Hot Dip Galvanized

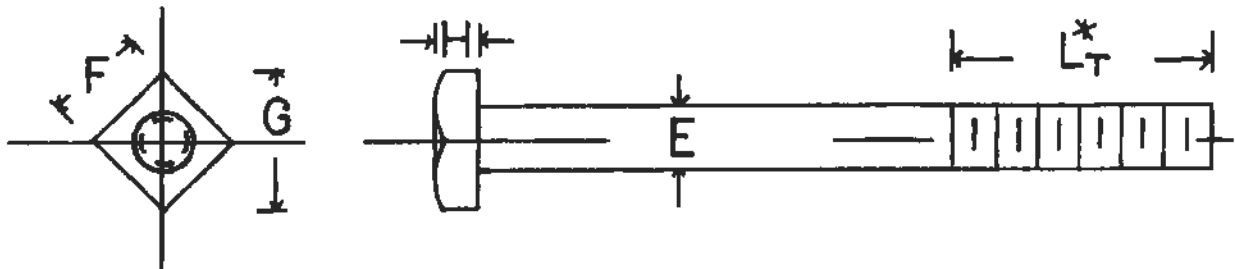


E	F	G	H	L _T *
1/2	3/4	27/32	11/32	6
5/8	15/16	1-1/16	7/16	6
3/4	1-1/8	1-1/4	1/2	6
7/8	1-5/16	1-1/2	9/16	6
1	1-1/2	1-11/16	11/16	6
1-1/8	1-11/16	1-7/8	3/4	6
1-1/4	1-7/8	2-1/8	7/8	6
1-1/2	2-1/4	2-1/2	1	6

* On bolts over 12" in length

See ASTM for dimension tolerances

Square Head Machine Bolts Hot Dip Galvanized

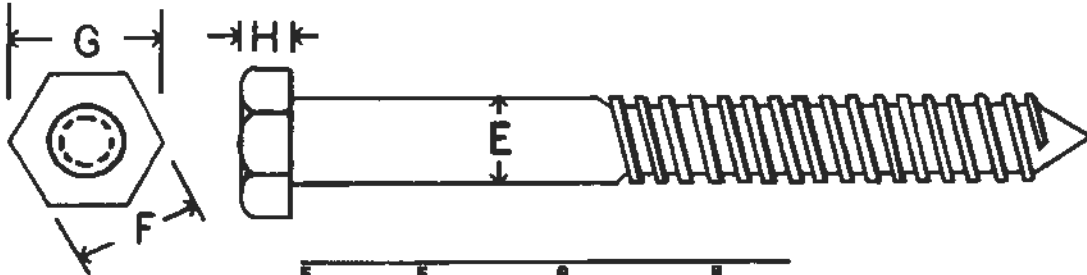


E	F	G	H	L _T *
1/2	3/4	1-1/64	11/32	6
5/8	15/16	1-5/16	7/16	6
3/4	1-1/8	1-1/2	1/2	6
7/8	1-5/16	1-3/4	19/32	6
1	1-1/2	1-1/16	21/32	6
1-1/8	1-11/16	2-5/16	3/4	6
1-1/4	1-7/8	2-9/16	7/8	6
1-1/2	2-1/4	3-1/8	1	6

* On bolts over 12" in length

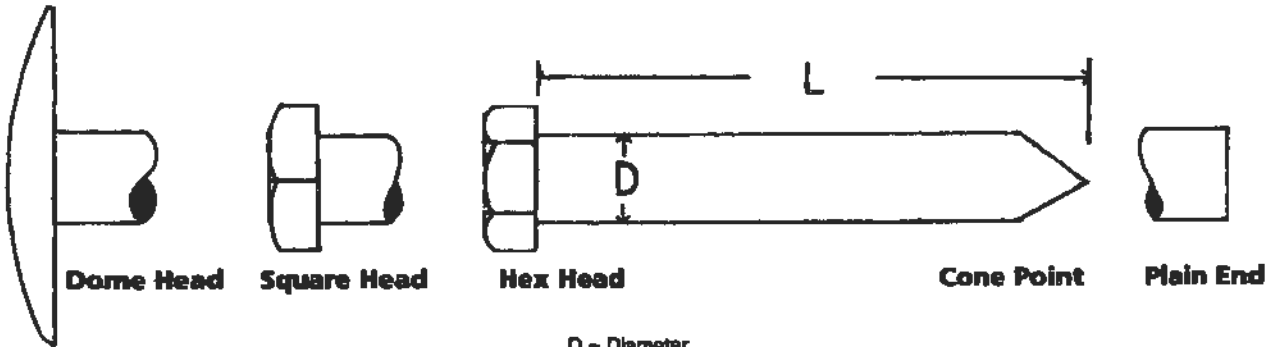
See ASTM for dimension tolerances

**Hex Lag Screws
 Hot Dip Galvanized**



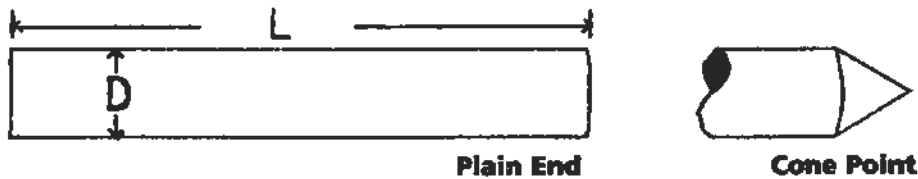
E	F	G	H
3/8	9/16	5/8	1/4
1/2	3/4	27/32	11/32
5/8	15/16	1-1/16	7/16
3/4	1-1/8	1-1/4	1/2
7/8	1-5/16	1-1/2	9/16
1	1-1/2	1-11/16	11/16

**Drift Bolts
 Hot Dip Galvanized**



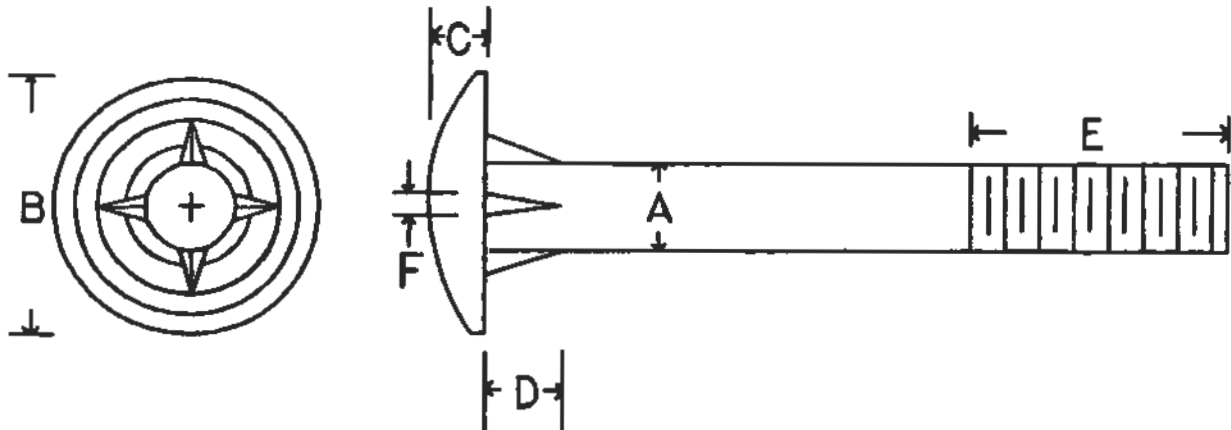
D = Diameter
 L = Length

**Drift Pins
 Hot Dip Galvanized**



D = Diameter
 L = Length

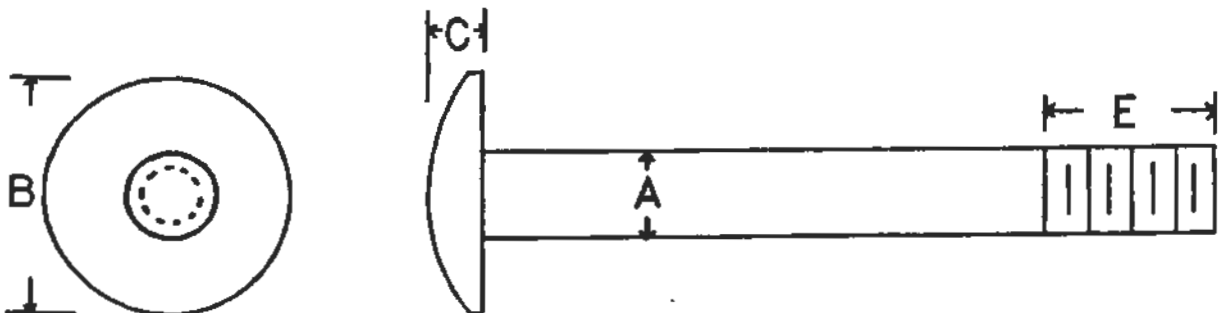
**Weather-Tuff Timber Bolts
 Hot Dip Galvanized**



A	B	C	D	E*	F
1/2	1-3/4	.275	1/4	6	.200
5/8	2-1/4	5/16	5/8	6	1/4
3/4	2-5/8	7/16	3/4	6	1/4
7/8	3	7/16	7/8	6	9/32
1	3	1/2	1	6	5/16

* On bolts over 12" in length

**Dome Head Bolts
 Hot Dip Galvanized**



A	B	C	E*
5/8	2-1/4	5/16	6
3/4	2-5/8	7/16	6
7/8	3	7/16	6
1	3	1/2	6

* On bolts over 12" in length

Ladders



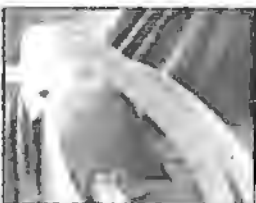
- Constructed from marine grade aluminum 1-1/4" I.D. 6063 T-5 aluminum pipe
- Welded for strength - extruded aluminum channels are serrated to produce a non-skid surface with no sharp edges
- Use as either a dock or seawall ladder

- Standard ladder sizes are 3, 4, 5, 6 and 7 step models - large inventory maintained
- Custom sizes and heavy duty (1-1/2" I.D. aluminum pipe) ladders upon request



Dock Bumpers

End Bumper



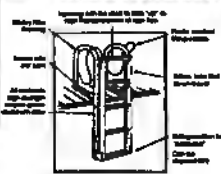
Flush Bumper

- Cost effective bumper for small to medium sized boats
- This fender will not mark or discolor boats
- Standard color is white - also available in other colors
- Easy to install

The Original "Lifting Ladder"

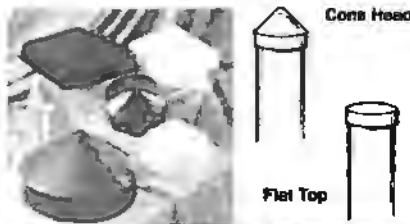


- 250 pound capacity
- Distance from dock to bottom rung - 2' retracted, 5' extended (2' retracted - 7' extended for 7 rung model)
- 6063 marine grade alloy to resist corrosion



- All welded construction
- Interior hand rail spacing - 17"
- Custom lengths available

Piling Caps



- Protects pilings from internal rot
- Black and white polyethylene cone or flat caps in 25 sizes
- Available with square bases for concrete pilings

Also available:

- Copper disks (.021 anneal copper) in sizes 10" to 20" for 6" to 16" pilings

Standard Dockside Electrical Pillars



European Power Receptacle With Internally Mounted Water Meters



Typical Line Drawing



SPB-41-4A
KING FULTON, INC.

Standard features:

- Dimensions: 8" x 8" x 41" (Height)
- Casing: Maximum four receptacles (8 poles)
- Extruded aluminum 6063 with 3/16" wall thickness
- Welded base for extra strength
- All stainless steel fasteners and hinges
- Isolation plate to separate water, telephone and TV from "electrical" (completely waterproof)
- Each receptacle protected by a thermal magnetic circuit breaker
- Marine grade electrical receptacles are available in 20 amp duplex GFI and 20, 30 and 50 amp twist-lock®, 100 amp single and three phase - pin and sleeve
- Electrical distribution block - direct feed - maximum wire size 2/0
- Plastic three sided lens
- Cone top
- Powder coated white
- 15 year unconditional warranty on structural integrity of casing
- Listed by qualified testing agency

Options:

- Power block - loop feed - maximum wire size 500 MCM cable
- TV/telephone receptacles
- PL-9 fluorescent light and photo cell
- Thermo plastic receptacle covers
- Aluminum covers with receptacle mounted on a 45° down angle
- Electric meters
- Water meters (internally or externally mounted) with locking ball valves
- Hose holders/cable brackets
- European power receptacles
- Flat top
- Natural finish and custom colors available